



July 2025

---

# RECYCLING BATTERIES FOR A SUSTAINABLE FUTURE

## BWM & BWEI MEMBER UPDATE



# SOLUTIONS

Blue Whale Materials (BWM) is an American lithium-ion battery testing and recycling company.

Since the company's founding in 2015 to help U.S. companies find recycling outlets, BWM has evolved to offer a full suite of domestic collection, testing, and processing solutions, building on its legacy of expertise and understanding of the global industry.

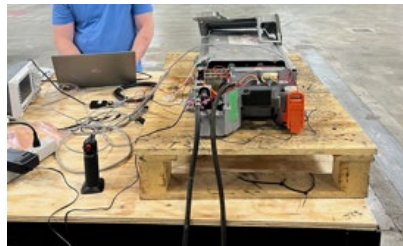
## BLACKSAND™



**14ktpa** processing plant in Bartlesville, OK by **2025**

54ktpa by 2028 with DOE award

## TESTING



Performance testing for manufacturers to end-of-life grading for 2<sup>nd</sup> life

## COLLECTION INFRASTRUCTURE



Expanding collection network for efficient, cost-saving logistics

## BATTERY MINERAL EXTRACTION



Ongoing R&D to add lithium, graphite & other metal extraction



# FLAGSHIP FACILITY BARTLESVILLE, OK



**Processing:** +14ktpa (2025); 54ktpa (2028)



**Storage:** 50,000sqft



**Testing & Evaluation**

## Services:

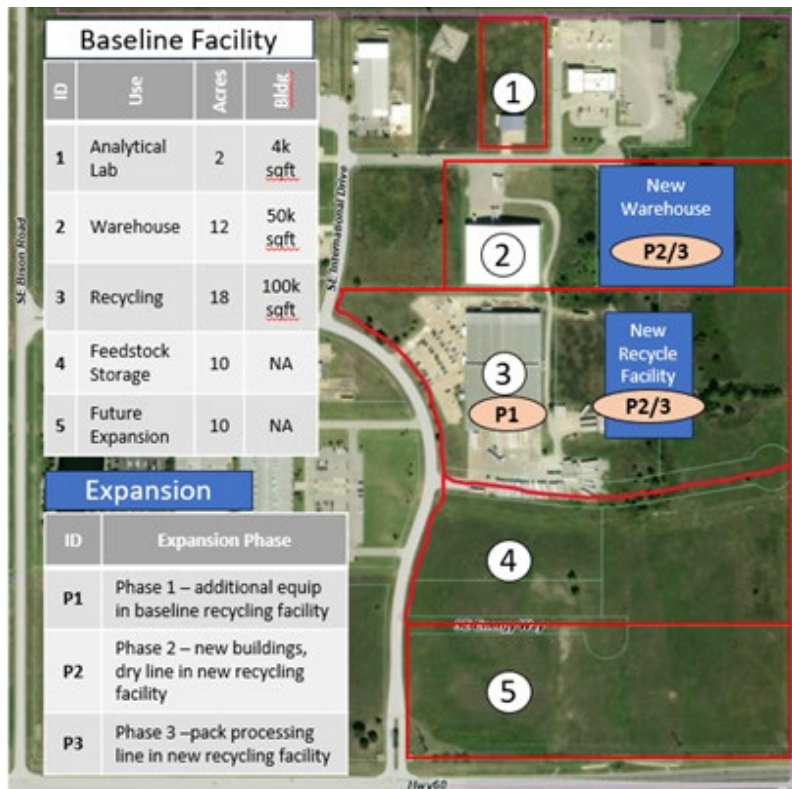
- Continuous processing
- Ability to process production scrap, EV batteries, and consumer batteries
- Mixed consumer sorting operations
- Testing and pack dismantling capabilities
- EOL SOH grading services on the pack and module level



# AWARDED DOE GRANT TO EXPAND BARTLESVILLE FACILITY

Fully operational, the plant will produce materials for

**>10GWh of LiBs per year  
& power 100k EVs**



- BWM selected for DOE award negotiation to expand Bartlesville site
- Expand feedstock capacity to > 54,000 tonnes per year
- Additional Line to process batteries and Mfg scrap with electrolyte
- Additional Line to process Mfg scrap without electrolyte
- Additional warehousing and storage space

Federal Cost Share:

**\$55,232,669**

Non-Federal Cost Share:

**\$55,232,675**

Comprehensive CBP:

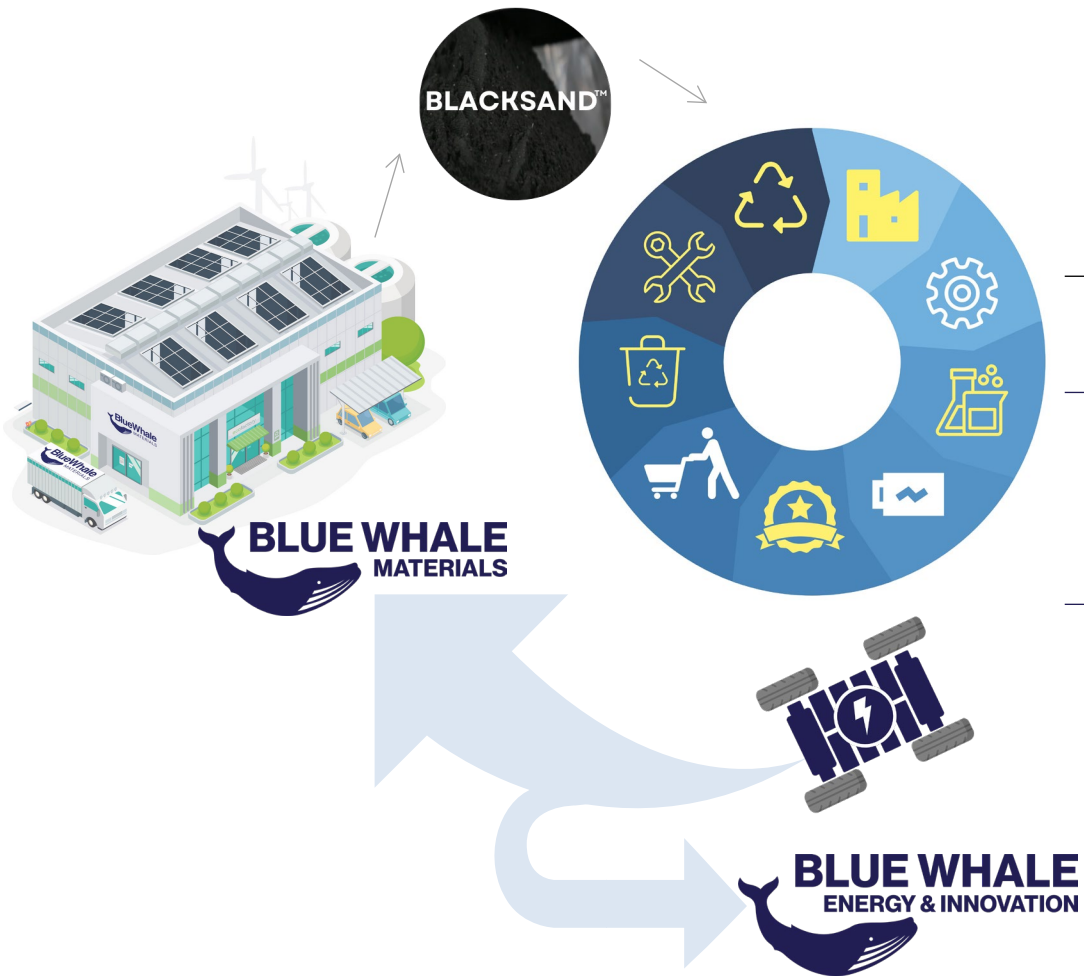
Creating **150** full-time jobs & **180** construction jobs in a DAC & Energy Community





# BW ENERGY & INNOVATION

BWE&I, formerly Eclipse Energy, has been in the battery testing business since 2012. The team, with 100+ years of experience, offers battery development and test services as well as new in-person trainings.



## VERTICALS

## SERVICES

### MANUFACTURING

- Life-cycle testing
- End of line performance testing up to **900V**
- Lead acid, Li-ion, and complex chemistries
- **ISO/IEC 17025** accredited since 2017

### R&D VALIDATION

- Performance testing
- Abuse testing

### REMANUFACTURING/ SECOND USE

- EOL state of health testing for packs, modules, cells
- **700+** channels for testing and grading
- EIS testing

### EDUCATION, TRAINING & CONSULTING

- Course offerings include Battery 101 (Cell Theory, Electrical Fundamentals), Fire Safety & First Responder Training, Energy Storage Fundamentals, Battery Management Systems, and Battery Standards & applications
- Courses offered in-person or virtual
- CEU Accreditation offered through Purdue University

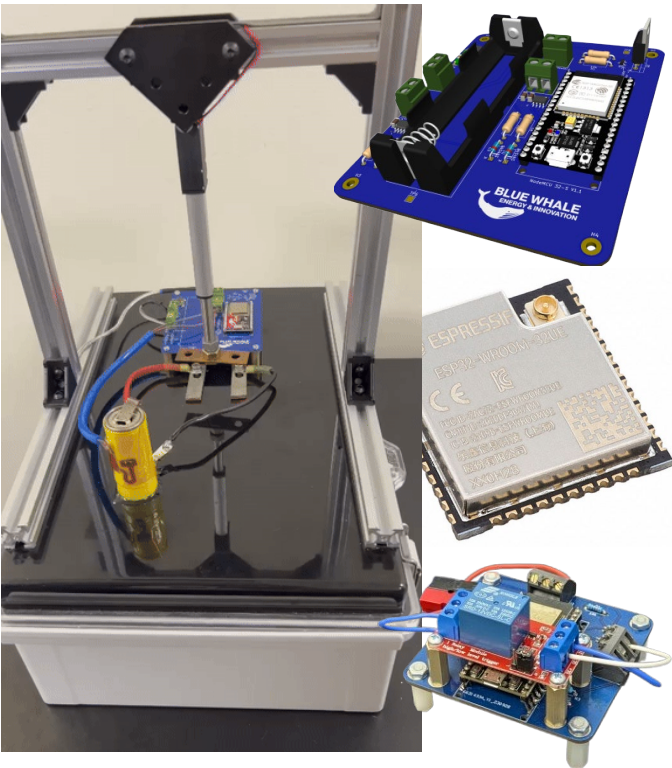


 **GREENFIELD, IN**

# BW ENERGY & INNOVATION

## Specializing in Novel, Complex Test Requirements

- From designing custom PCB for a client with niche needs to developing a custom LIN communication board to interface with cyclers.

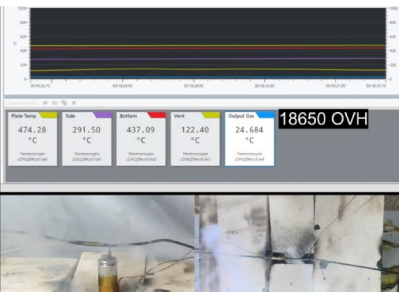


## Comprehensive, Rigorous Testing with Reliable Test Data

- BWEI specializes in comprehensive abuse testing up to 5kWh modules:
  - Mechanical
  - Nail penetration
  - Electrochemical
  - Thermal cycle/thermal shock
  - Overcharge
  - Overheat
  - & more



- Offers comprehensive data reports with customized testing solutions.



## Testing & Grading of End-Of-Life Packs

- EOL state of health testing for packs, modules, cells
- Service model for recalls or EOL determination for warranty batteries
- EIS testing



Grading (Capacity Basis)		EV Range/ESS Power/Energy
100%	Service Quality ~ 10-15 years	Varies
90%		Customer Accepts
80%		
70%		
60%	Unknown Life Left	Customer Issues
50%		
40%	Can't Power a Car	Customer Doesn't Buy
30%		
20%		
10%	Rapid Failure Poss.	
0%		





# Thank You

**Christina Chilcote**

Director of Development

(914) 471-7720

cchilcote@bluewhalematerials.com

**David Monk**

Commercial & Business Development Manager

(716) 697-2727

dmonk@bluewhalematerials.com

**Danny Marshall**

Lead Manager of Testing and  
Evaluation

(731) 335-1961

dmarshall@bw-ei.com



[www.bluewhalematerials.com](http://www.bluewhalematerials.com)



[Blue Whale Materials LLC](#)